



# GMT MONTHLY MEMBERSHIP PROGRESS REPORT

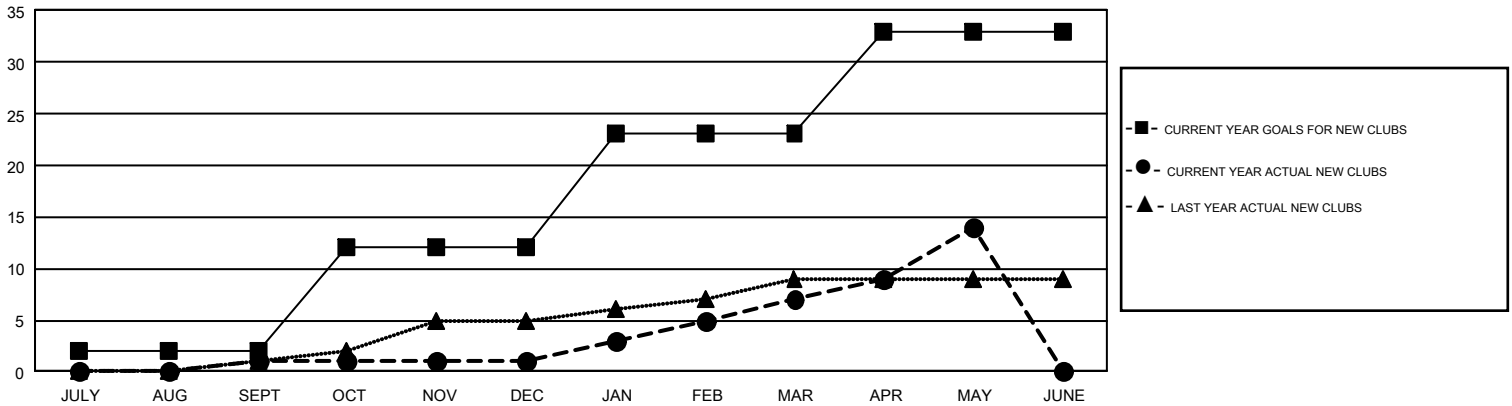
Results as of: 5/31/2017

## GMT Constitutional Area 2

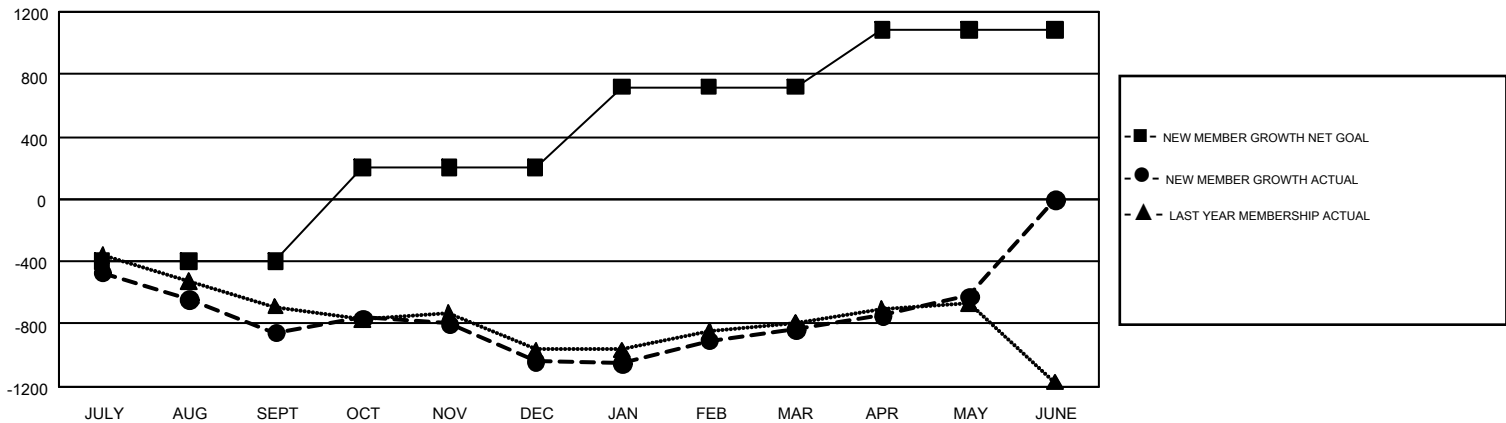
REPORT DOES NOT INCLUDE CLUBS IN UNDISTRICTED AREAS.

Clubs				Members			
RESULTS FOR 2016-2017				RESULTS FOR 2016-2017			
QUARTER	NEW CLUB GOAL	NEW CLUBS	DROPPED CLUBS	QUARTER	NEW MEMBER GROWTH NET GOAL (not reinstated or transfers)	NEW MEMBER GROWTH ACTUAL (not reinstated or transfers)	DROPPED MEMBERS ACTUAL (including transfers)
JULY/AUG/SEPT	2	1	11	JULY/AUG/SEPT	-395	518	1,373
OCT/NOV/DEC	10	0	8	OCT/NOV/DEC	599	1,075	1,258
JAN/FEB/MAR	11	6	4	JAN/FEB/MAR	516	1,153	950
APR/MAY/JUNE	10	7	1	APR/MAY/JUNE	365	821	606

GOALS AND ACTUAL NEW CLUBS CUMULATIVE



GOALS AND ACTUAL MEMBERS CUMULATIVE



DROPPED CLUBS: 24	1,057 CLUBS OF 1,662 ADDED 1 OR MORE NEW MEMBERS	<u>GENDER DISTRIBUTION</u>	
DROPPED MEMBERS		MALE	27,585 (69.44%)
DECEASED	514	FEMALE	12,141 (30.56%)
CLUB CANCELLED	174	TOTAL FAMILY UNIT MEMBERS	7,281
OTHER	3,499	FAMILY MEMBERS PAYING HALF DUES	3,714
TOTAL	4,187		

[CLICK HERE FOR CUMULATIVE MEMBERSHIP DATA](#)